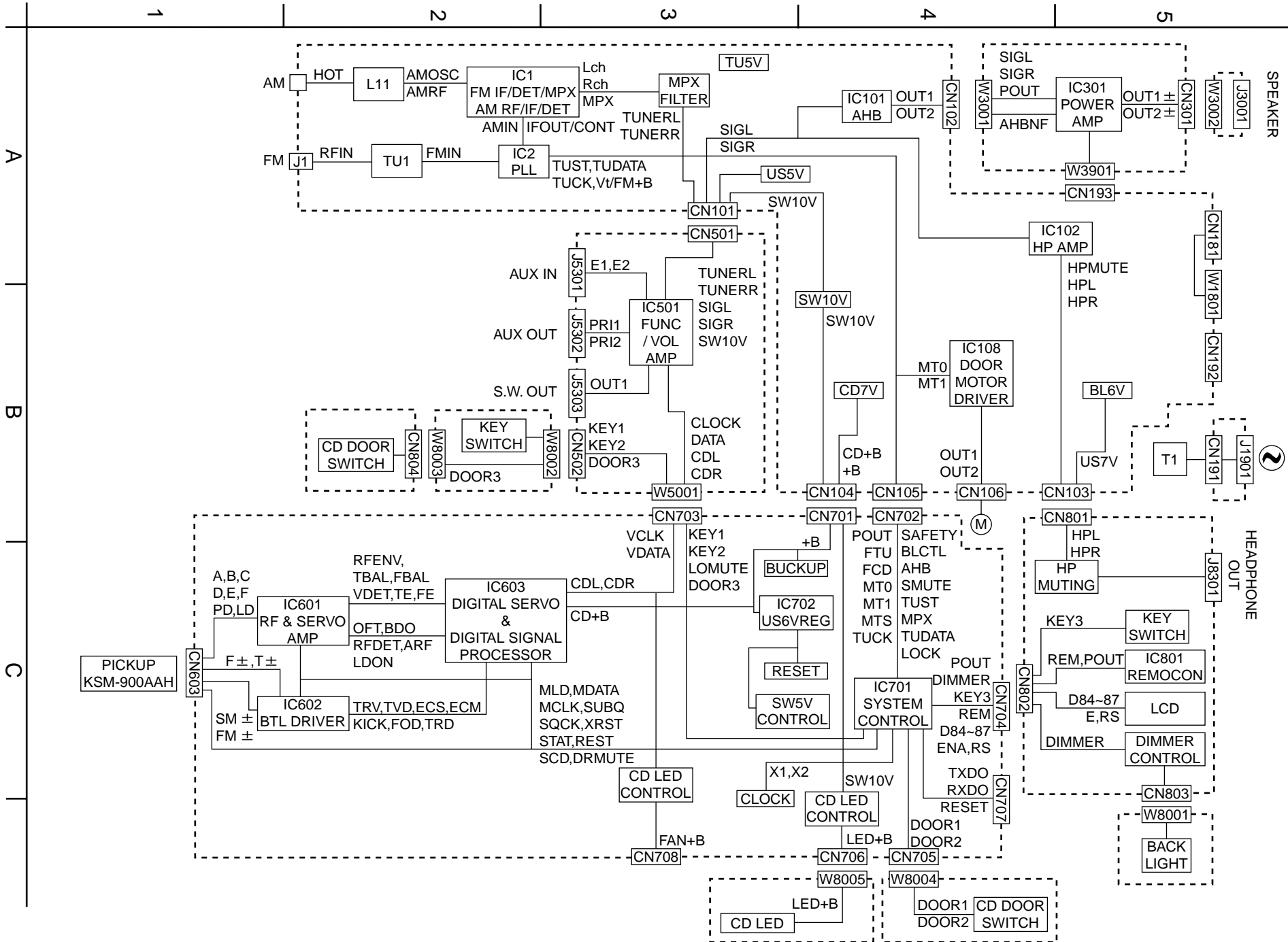


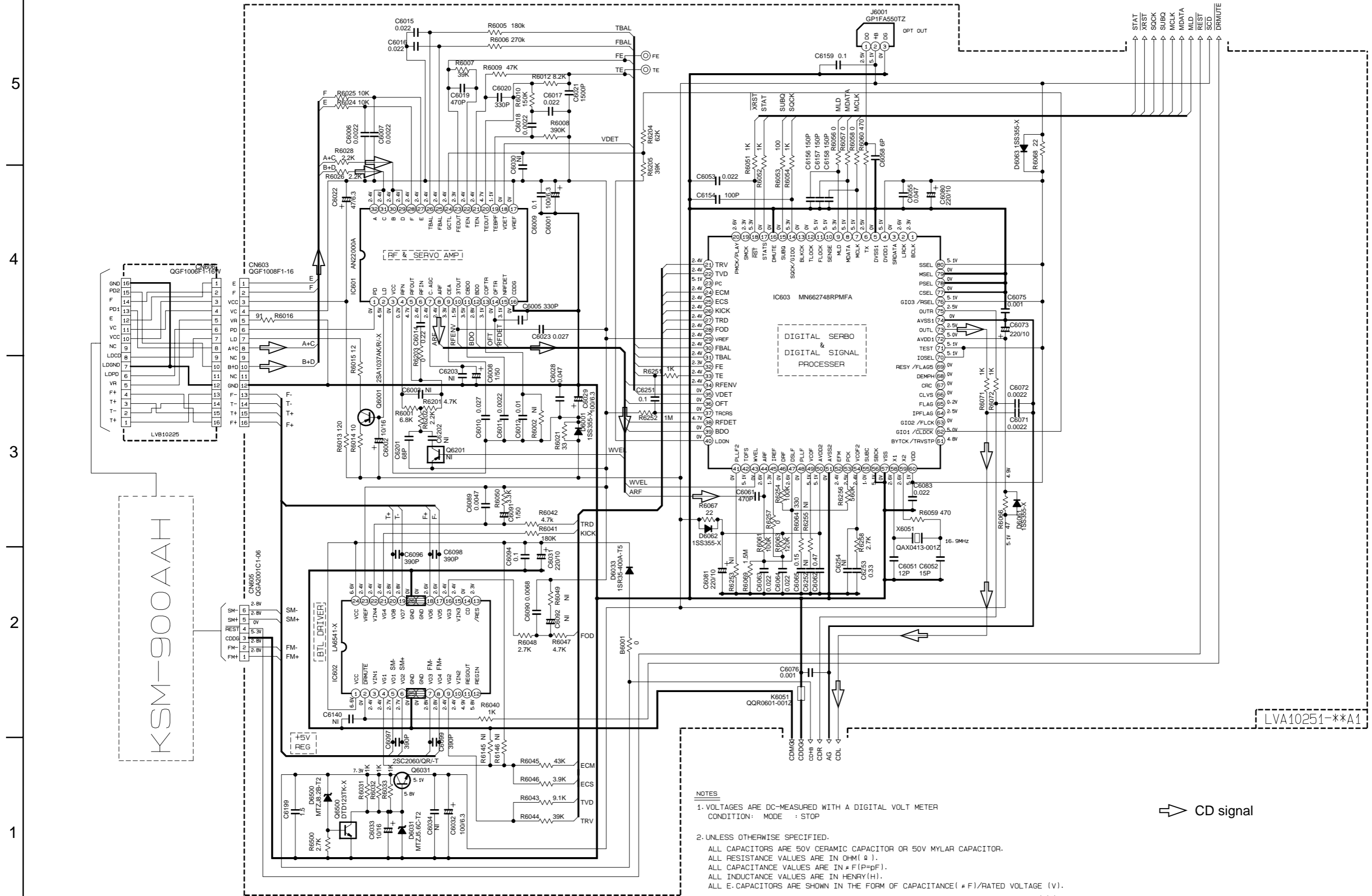
Block diagram



**< M E M O >**

# Standard schematic diagrams

## ■ CD servo control section



**NOTES**

1. VOLTAGES ARE DC-MEASURED WITH A DIGITAL VOLT METER  
CONDITION: MODE : STOP
2. UNLESS OTHERWISE SPECIFIED.  
ALL CAPACITORS ARE 50V CERAMIC CAPACITOR OR 50V MYLAR CAPACITOR.  
ALL RESISTANCE VALUES ARE IN OHM(Ω).  
ALL CAPACITANCE VALUES ARE IN #F(P=PF).  
ALL INDUCTANCE VALUES ARE IN HENRY(H).  
ALL E.CAPACITORS ARE SHOWN IN THE FORM OF CAPACITANCE( # F)/RATED VOLTAGE (V).

/s/R/LV5200602

Note:tr/jsc/sd550/LV5200602\_GNS10002-001A 2/8  
FS-SD550R/770R/990R

Power supply & main circuit section

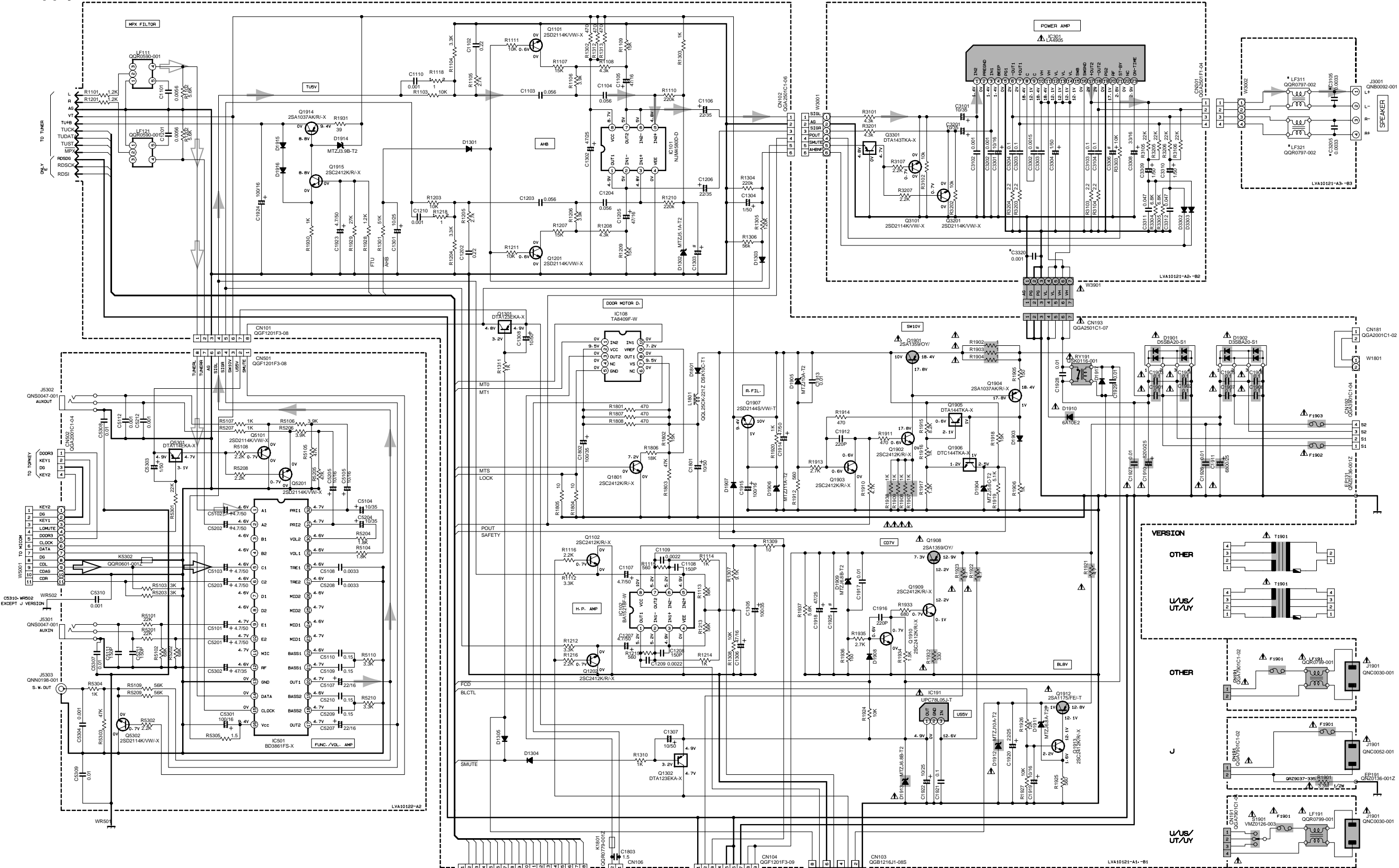
5

4

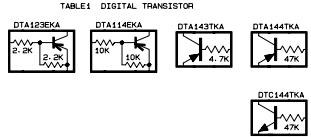
3

2

1



- NOTES
1. VOLTAGES ARE DC-MEASURED WITH A DIGITAL VOLT METER OR OSCILLOSCOPE WITHOUT INPUT SIGNAL. CONDITION --- CD STOP MODE
  2. UNLESS OTHERWISE SPECIFIED RESISTORS ARE 1/8W ±5% CARBON RESISTOR. ALL RESISTANCE VALUES ARE IN OHM(Ω). ALL CAPACITORS ARE CERAMIC CAPACITOR OR MYLAR CAPACITOR. ALL CAPACITANCE VALUES ARE IN pF(pF). ALL INDUCTANCE VALUES ARE IN mH(mH). ALL E-CAPACITORS ARE SHOWN IN THE FORM OF CAPACITANCE (μF)/RATED VOLTAGE (V). ALL DIODES ARE 1SS133
  3. \*MARKS ARE B/E/EN/EV/EE/UB VERSION ONLY. OTHER VERSIONS ARE OPEN OR SHORT



#Marks

	C1303	C3303	C3306	C1305
FS-SD550	22/35	0.01	100/35	0.01
FS-SD770	↑	↑	↑	↑
FS-SD990	47/25	0.1	47/25	0.032

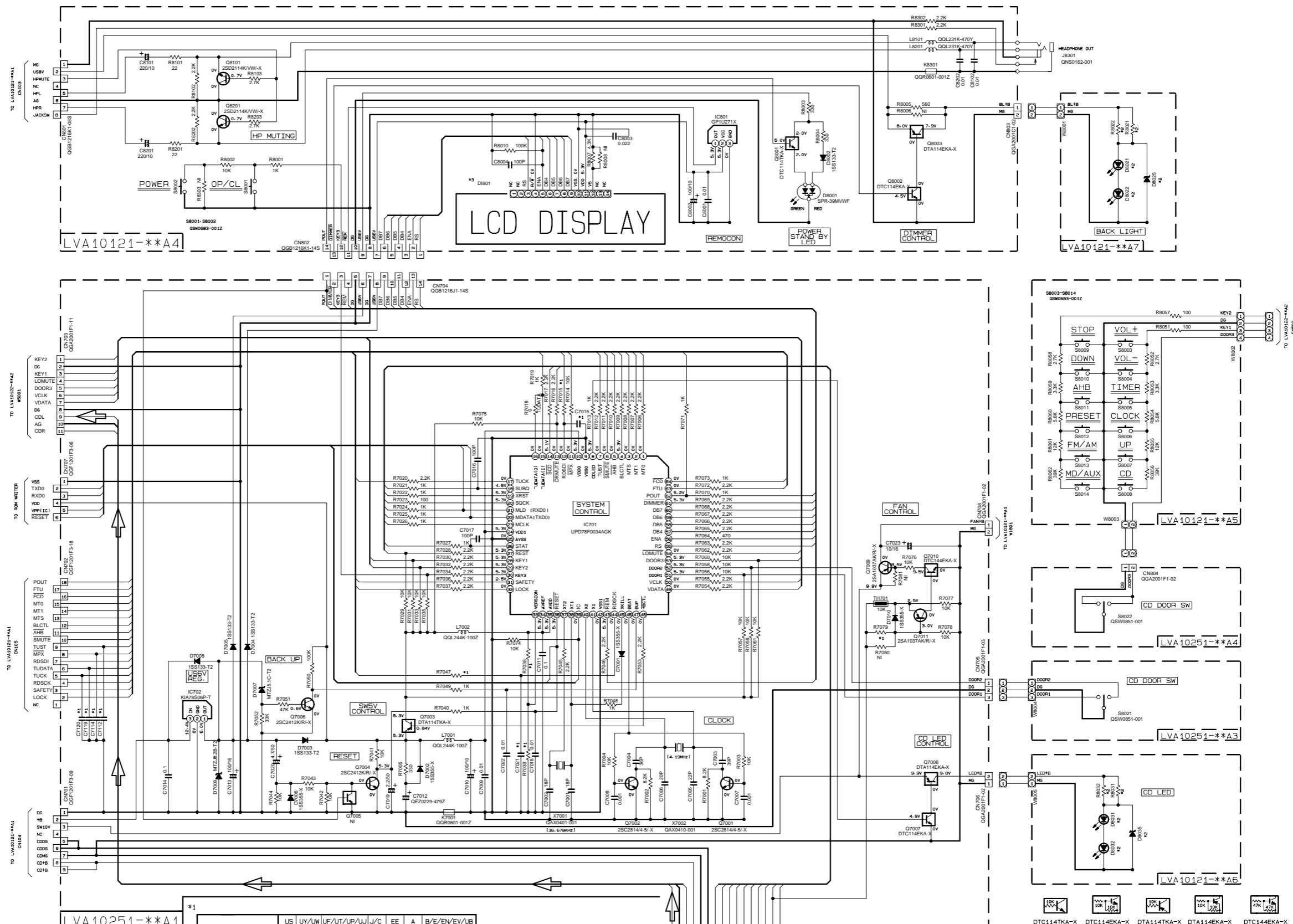
	T1901	F1901	F1902	F1903
∕C	QGT0286-002	QMF51E2-1R0-J1	QMF51E2-6R3-J1	QMF51E2-4R0-J1
B/E/EN/EE/UB	QGT0286-003	QMF51E2-RB0-J1	QMF51E2-6R3-J1	QMF51E2-3R15-J1
U/UY/US/UM/UJ	QGT0286-004	QMF51E2-1R0-J1	QMF51E2-SR0-J1	↑
A	QGT0286-005	QMF51E2-RB0-J1	QMF51E2-6R3-J1	↑
U/UP	QGT0286-006	↑	↑	↑

Parts are safety assurance parts. When replacing those parts make sure to use the specified one.

- Tuner signal
- CD signal
- Main signal

System control section

5  
4  
3  
2  
1



- NOTES**
- VOLTAGES ARE DC-MEASURED WITH A DIGITAL VOLT METER OR OSCILLOSCOPE WITHOUT INPUT SIGNAL.  
CONDITION --- CD STOP AT AC SUPPLY  
VOL. IS BASS 0 TREBLE 0 AHB-ON DIMMER-OFF
  - UNLESS OTHERWISE SPECIFIED, RESISTORS ARE 1/10W (OR 1/16W) ±5% MG RESISTOR.  
ALL RESISTANCE VALUES ARE IN OHM(Ω).  
ALL CAPACITORS ARE CERAMIC CAPACITOR OR MYLAR CAPACITOR.  
ALL CAPACITANCE VALUES ARE IN P.F.(PF).  
ALL INDUCTANCE VALUES ARE IN mH(mH).  
ALL E-CAPACITORS ARE SHOWN IN THE FORM OF CAPACITANCE (μF)/RATED VOLTAGE (V).

	US	UY/UM	UF/UT	UP/UJ	UJ/C	EE	A	B/E/EN/EV/UB
R703B	27K	66K	27K	47K	12K	4.7K	10K	
R7039	4.7K	27K	4.7K	33K	27K	27K	-	
R7015	-	-	-	-	1K	-	1K	
C7015	-	-	-	-	100P	-	100P	
R7047	-	-	-	-	1K	-	1K	
C7021	-	-	-	-	100P	-	100P	
C7123, C7114, C7119, C7120	100P	100P	100P	-	-	-	-	
R7079	6.8K	5.1K	5.1K	5.1K	5.1K	5.1K	5.1K	

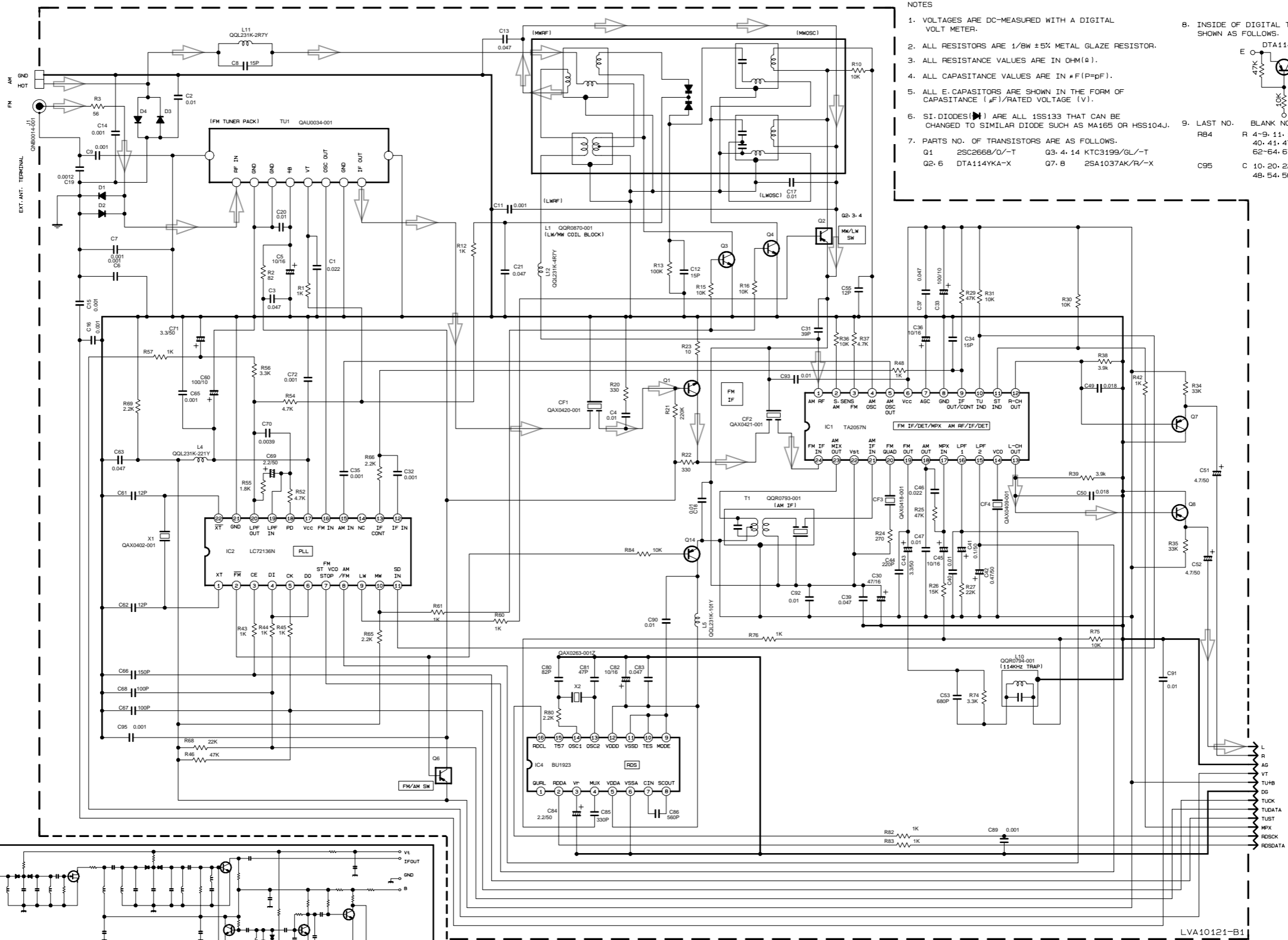
	FS-S0550(R)/770(R)	FS-S0990(R)
D8021, D8022	SELU1E50CM	TLYH156P
D8025	MTZJ10C-T2	-
R8021, R8022	100	390
D8031, D8032	SELU1E56EM	TLYH156P
D8035	MA3100/M-X	-
R8031, R8032	430	560

	D1801
FS-S0550/770	0L00120-001
D8035	MA3100/M-X
FS-S0990	0L00185-001

/S/R/LVS200612

CD signal

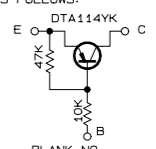
Tuner section



NOTES

1. VOLTAGES ARE DC-MEASURED WITH A DIGITAL VOLT METER.
2. ALL RESISTORS ARE 1/8W ±5% METAL GLAZE RESISTOR.
3. ALL RESISTANCE VALUES ARE IN OHM(Ω).
4. ALL CAPACITANCE VALUES ARE IN \*F(P=pF).
5. ALL E. CAPACITORS ARE SHOWN IN THE FORM OF CAPACITANCE (μF)/RATED VOLTAGE (V).
6. SI. DIODES(▶) ARE ALL 1SS133 THAT CAN BE CHANGED TO SIMILAR DIODE SUCH AS MA165 OR HSS104J.
7. PARTS NO. OF TRANSISTORS ARE AS FOLLOWS.  
Q1 2SC2668/O/-T Q3 4.14 KTC3199/GL/-T  
Q2 6 DTA114YKA-X Q7 8 2SA1037AK/R/-X

B. INSIDE OF DIGITAL TRANSISTORS ARE SHOWN AS FOLLOWS:



9. LAST NO. BLANK NO.  
R 4-9, 11, 14, 17-19, 28, 32, 33  
40, 41, 47, 49-51, 53, 58, 59  
62-64, 67, 70-73, 77-79, 81  
C 10, 20, 22-29, 38  
48, 54, 56-59, 64, 73-79, 87, 88

CONDITION PIN NO.	1	2	3	4	5	6	7	8	9	10	11	12	13	14	15	16	17	18	19	20	21	22	23	24
IC1 FM NO SIGNAL	2.0	0.5	0	2.0	5.1	5.1	0	0	0.3	5.1	5.1	1.1	1.1	4.4	3.7	3.7	1.4	0	1.3	1.1	2.0	2.0	5.1	2.0
IC1 FM 60dB STEREO	2.0	0.5	0	2.0	5.1	5.1	1.1	0	0.3	5.1	5.1	1.1	1.1	4.3	4.1	3.7	1.4	0	1.4	1.1	2.0	2.0	5.1	2.0
IC2 AM NO SIGNAL	2.0	0.5	0	2.0	5.0	5.1	0	0	0.3	5.1	5.1	1.1	1.1	4.5	0.1	0	1.4	1.4	1.5	1.6	2.0	2.0	5.1	2.0
IC2 FM NO SIGNAL	2.4	0	0	5.1	5.0	5.1	3.7	3.7	2.0	3.8	5.1	0	0	1.0	0	2.6	5.1	1.0	1.0	3.7	0	2.7		
IC4 FM NO SIGNAL	2.0	2.5	2.5	2.5	5.0	0	2.5	2.5	0	0	0	5.0	2.4	2.4	2.5	2.5								

Tr NO.	Q1	Q5	Q7	Q8	Q14
PIN NO.	E C B	E C B	E C B	E C B	E C B
FM 87.5MHz NO SIGNAL	0 7.5 0.7	8.8 8.7 0	1.6 0 1.1	1.6 0 1.1	5.1 5.1 4.5
AM 522KHz NO SIGNAL	0 0 0	8.8 8.7 0	1.6 0 1.1	1.6 0 1.1	5.1 0.1 8.7

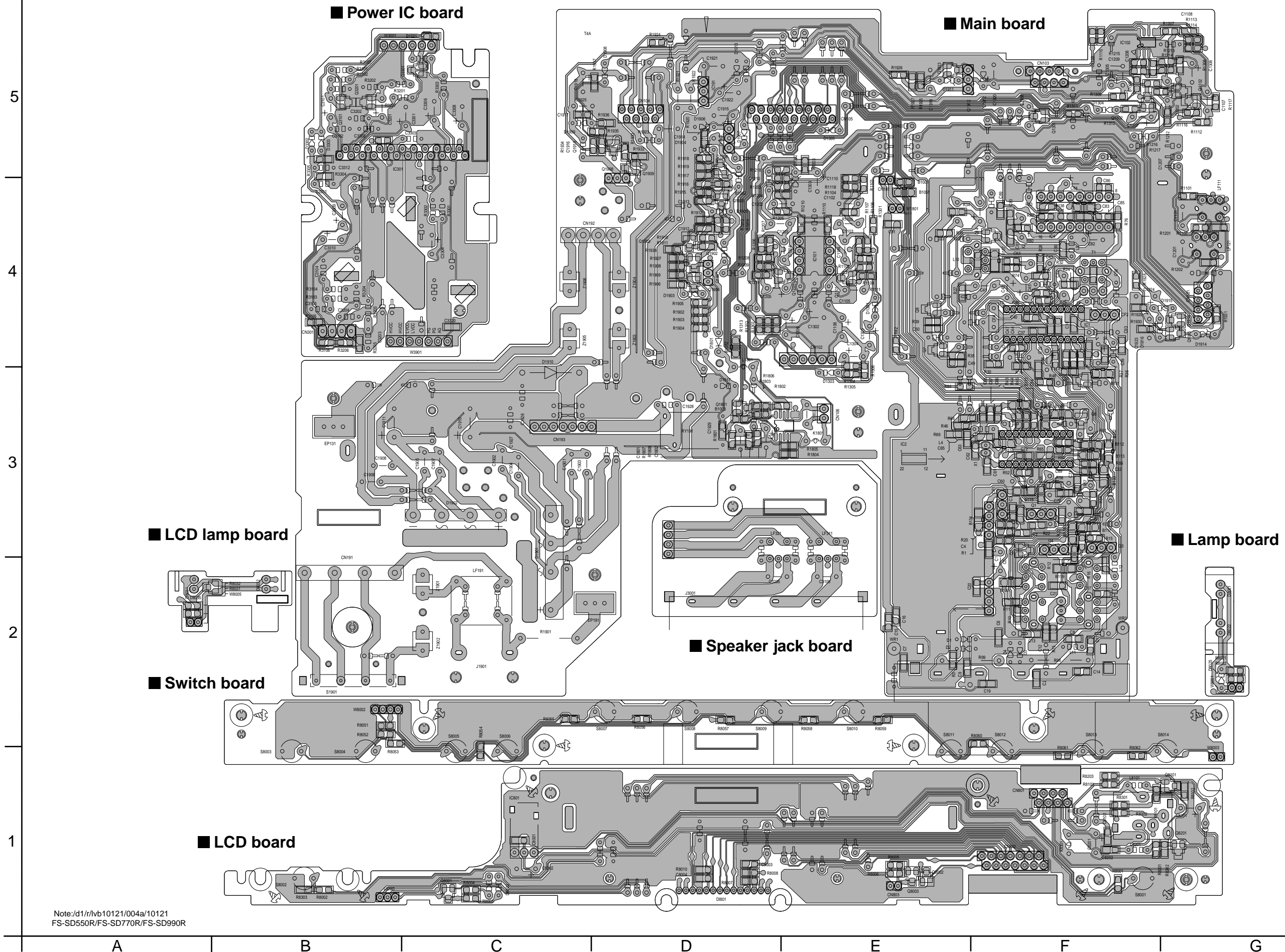
  

Tr NO.	Q2	Q3	Q4
PIN NO.	E C B	E C B	E C B
AM 522KHz NO SIGNAL	2.0 2.0 0.1	0 0 0.7	0 0 0.7
AM 144KHz NO SIGNAL	2.0 2.0 2.0	0 0 0.1	0 0 0.1

➔ Tuner signal

Note: tr/s/jsc/sd550/LVS200295\_GNS10002-001A 5/8  
FS-SD550R/770R/990R\_B/E/EN/EV/UB

Printed circuit boards



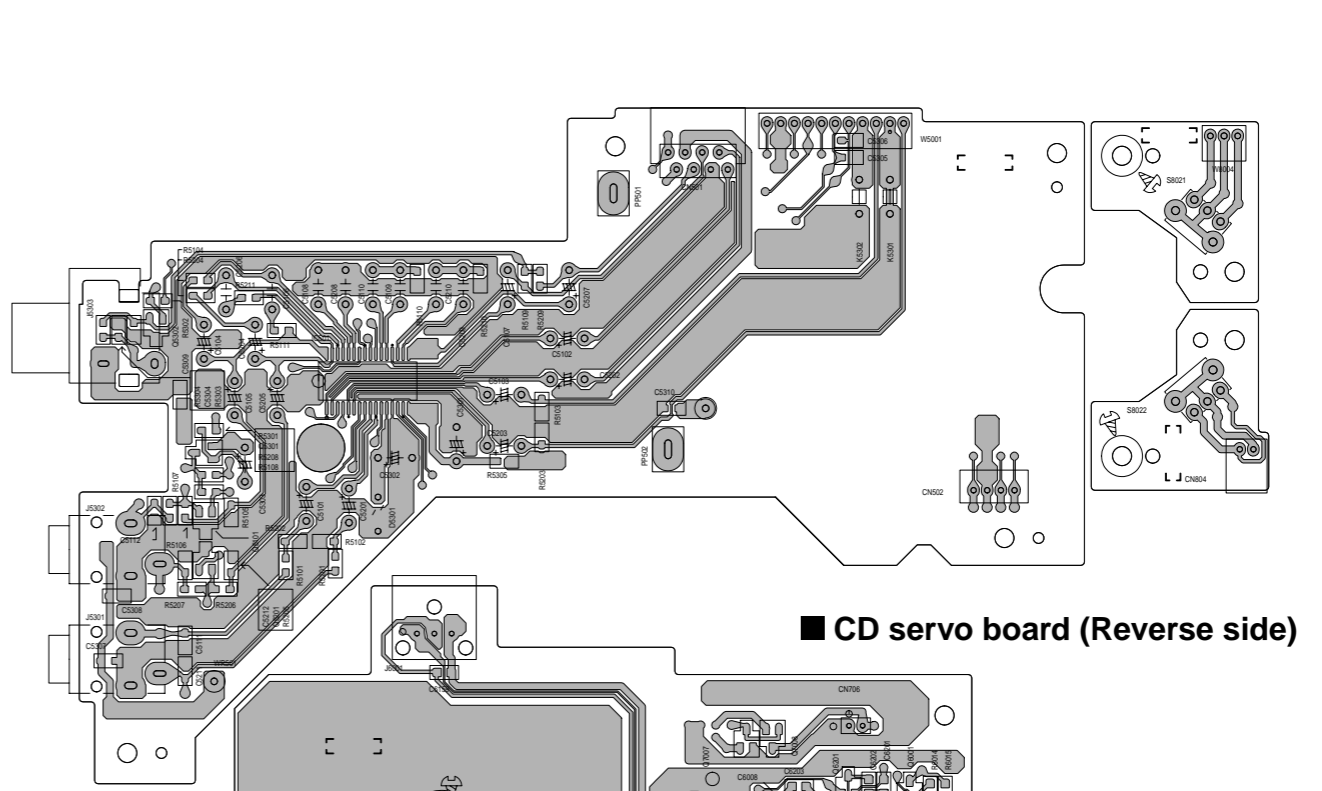
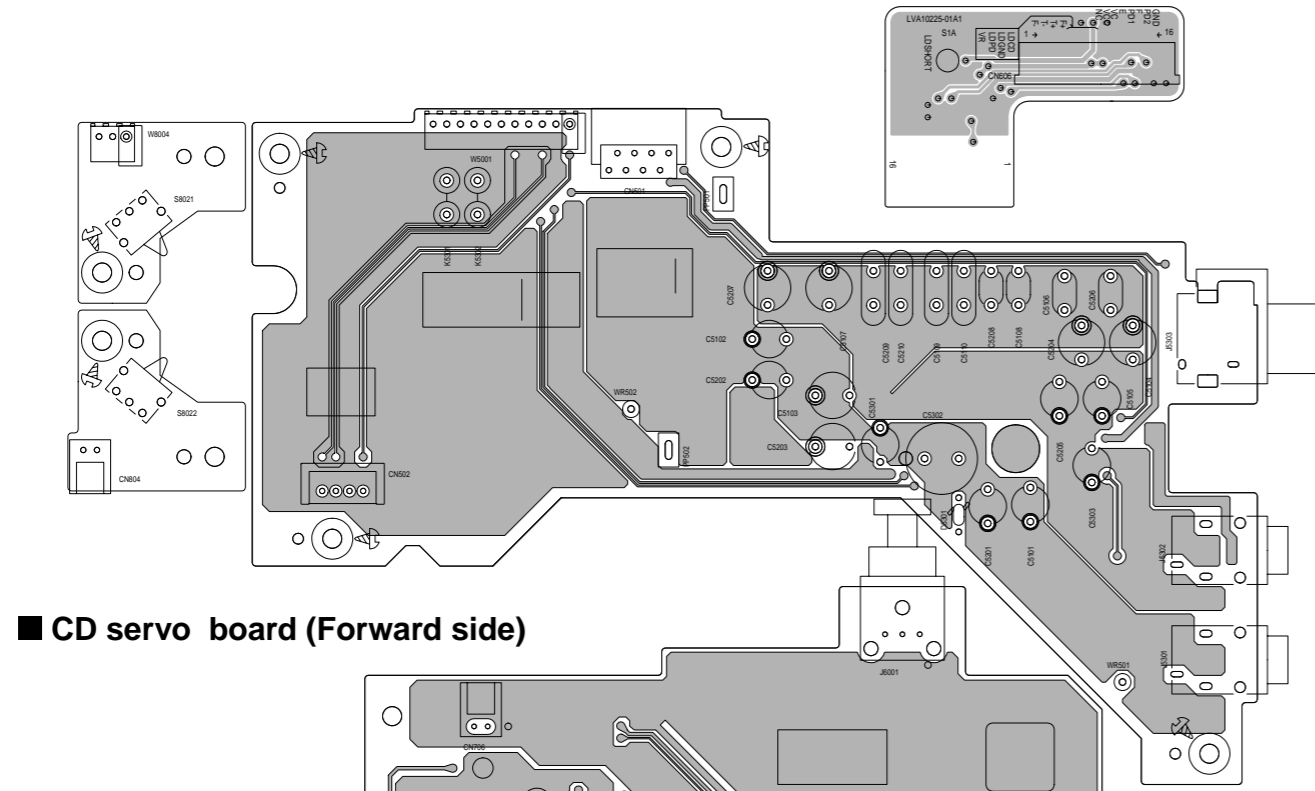
Note:/d1/r/lvb10121/004a/10121  
FS-SD550R/FS-SD770R/FS-SD990R

■ Line board (Forward side)

■ Sub board (forward side)

■ Line board (Reverse side)

5  
4  
3  
2  
1



■ CD servo board (Forward side)

■ CD servo board (Reverse side)

